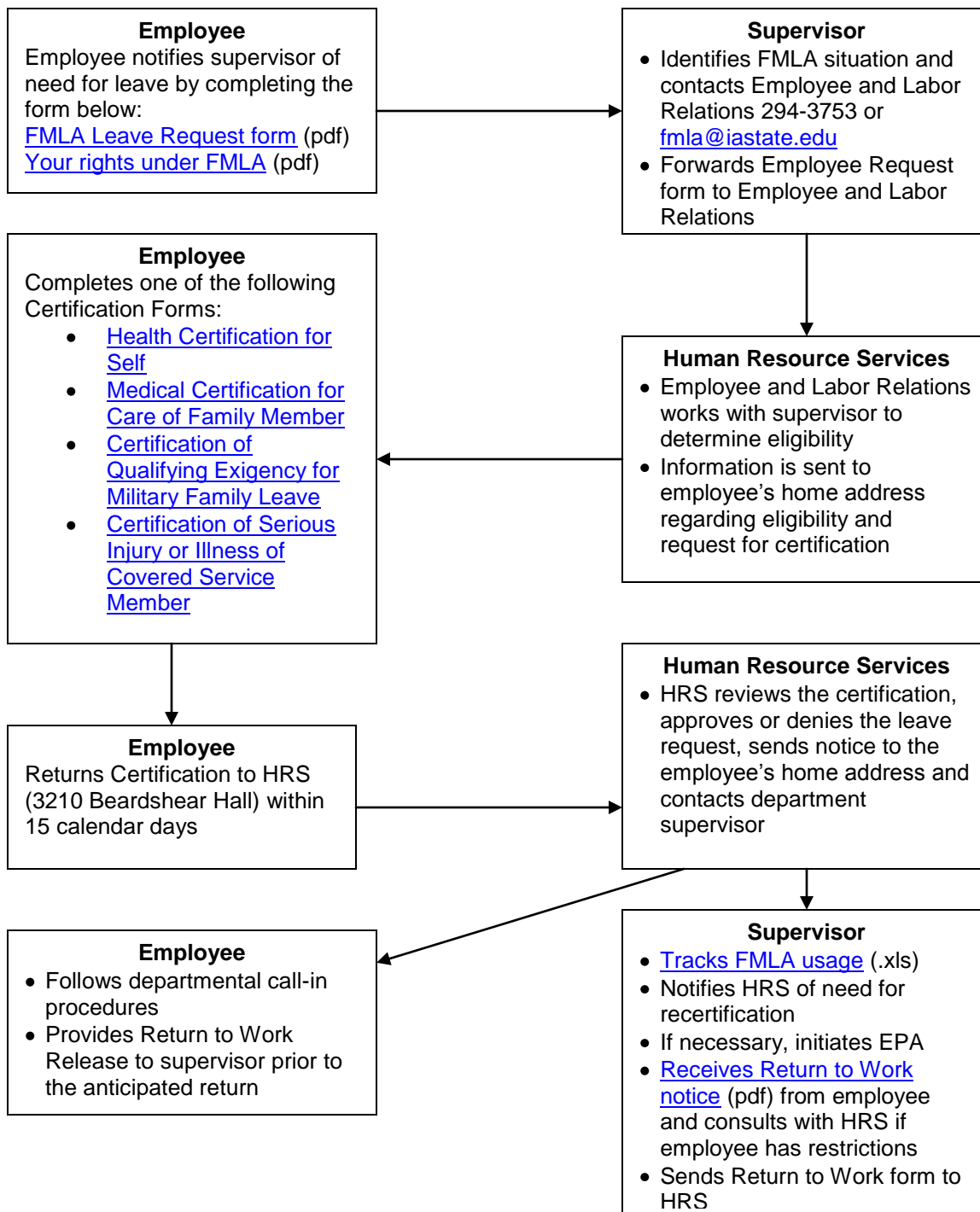


Family and Medical Leave Act Procedures



Related Information

[Leave Retention Form](#) (pdf)

[Catastrophic Leave](#)

[AFSCME Medical Leave Without Pay Notice](#)

[FMLA Frequently Asked Questions](#)

For Questions, contact Human Resource Services
(Employee and Labor Relations) at 515-294-3753 or fmla@iastate.edu