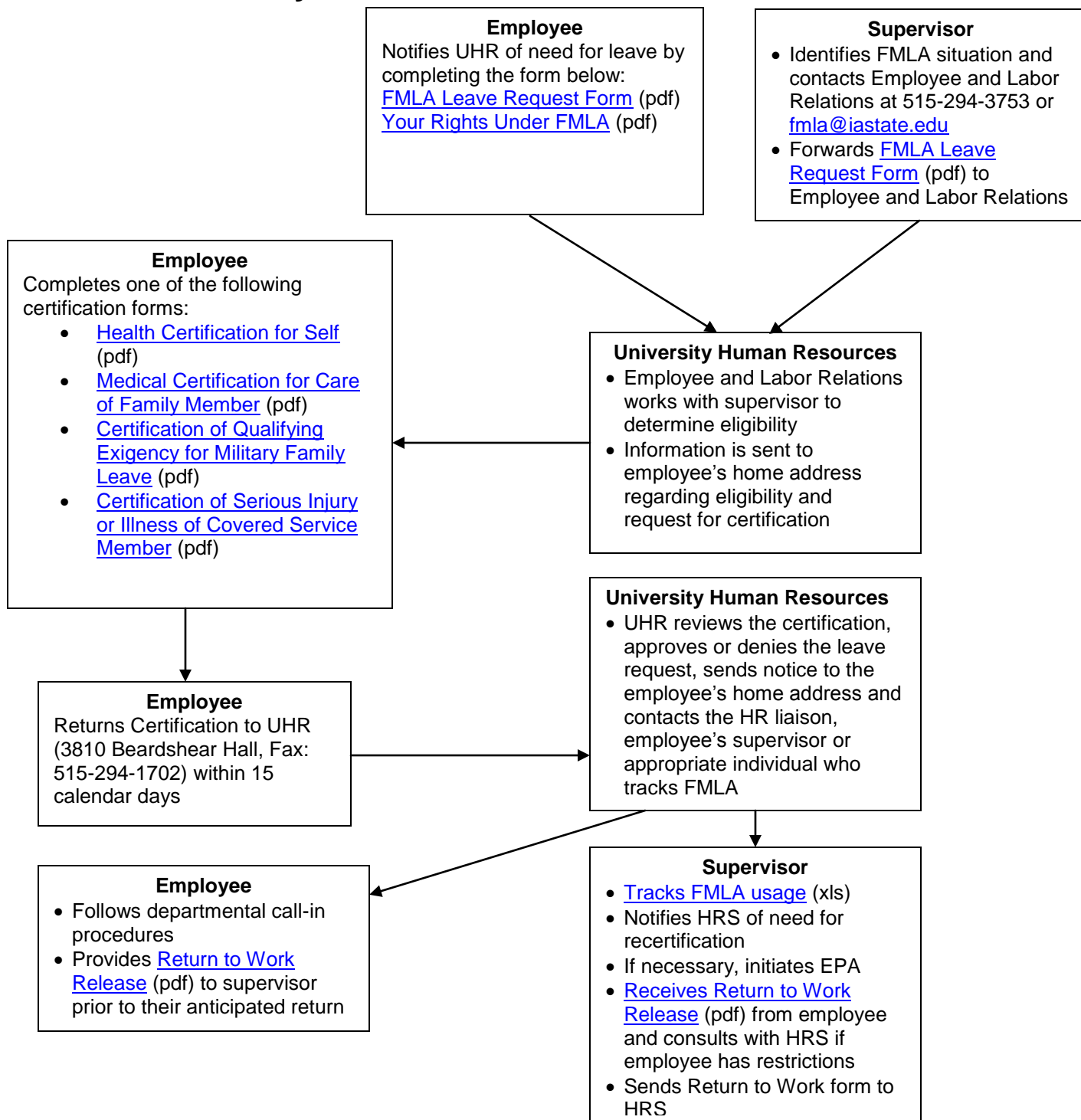


Family and Medical Leave Act Procedures



Related Information

[Leave Retention Form](#) (pdf)

[AFSCME Medical Leave Without Pay Notice](#) (pdf)

[FMLA Frequently Asked Questions](#) (pdf)

For questions, please contact University Human Resources.

Employee and Labor Relations, 3810 Beardshear Hall

Phone: 515-294-3753 Fax: 515-294-1702 Email: fmla@iastate.edu